

Infinity in Tiny

A proposal for temporary art in Providence

Yan Wang and Yuanyuan Dai/ May 2014



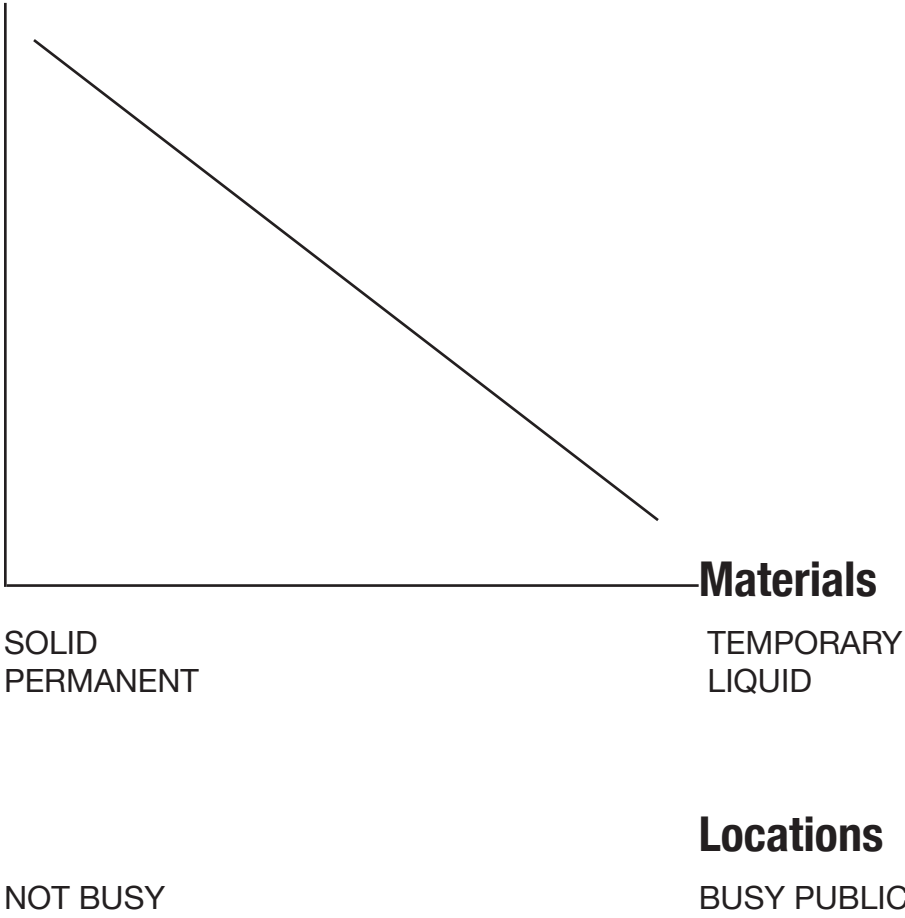
Abstract

Infinite in Tiny
Micro-landscape on manhole covers in Providence
Tiny landscape, unlimited imagination.

Since people who live in city nowadays rarely have time to enjoy the beauty of nature, by mimicking the natural scene, we brought the poetic natural landscape to the city. Making the micro-landscape on manhole covers, the place always ignored by drivers and pedestrians, we encourage city dwellers to enjoy the natural landscape and inspire their imagination, meanwhile actually participate in the changing process.

We used different materials, such as sand, small pebbles, magnetic powders and carbon dioxide ice and flowers to create micro-landscape on manhole cover on the street. By using different materials, we examined the life length of t micro-landscape we made due to different surroundings. We trace the changes while time goes by.

Life Span:







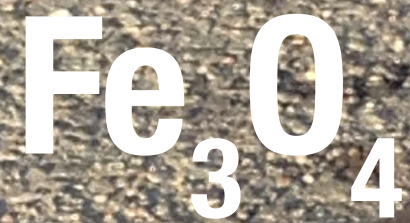


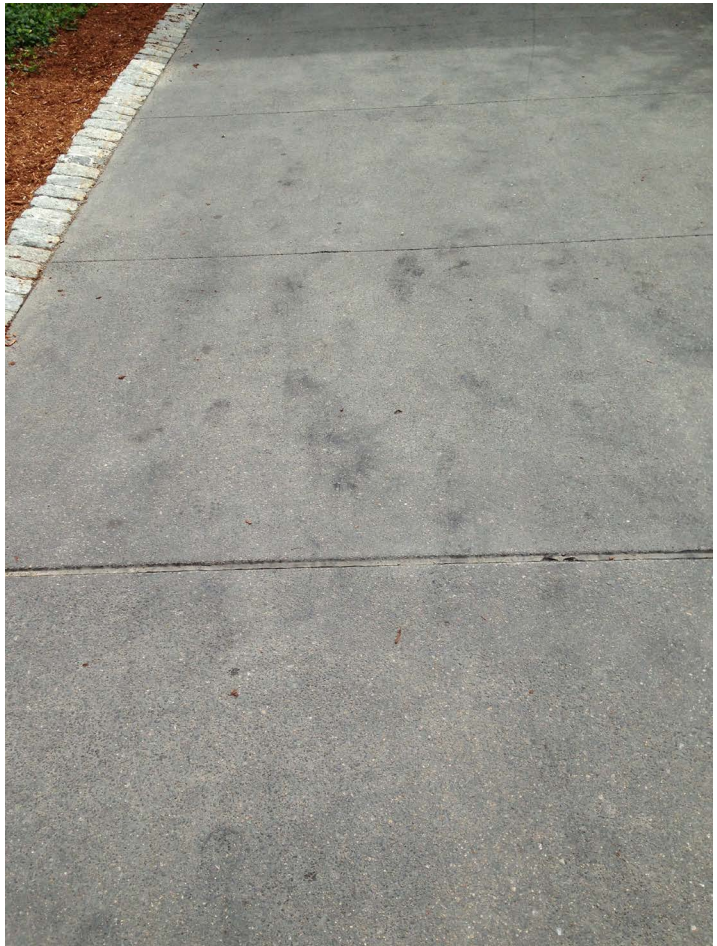
SANDS

We created the sandy hills and pulverous terrace fields in downtown and Brown University's campus. The sandy hill was last about 4 hours and finally totally crashed by car and pedestrians. We finally cleaned it up because of a police's warning. The terrace field on the road in front of the campus arch lasted from 5pm till the next day and finally cleaned by the cleaner. Most students passed by and got interested in the micro-landscape as it reminded their memory of natural landscape in their hometown.









SAKURA

Sakura: Inspired by the Fuji Mountain in Japan, we created the sandy mountain landscape and covered with Japanese symbolic flower, the Sakura. Spring is the season when Sakura is in full bloom. The petals flew in the wind while the car passed by.





DETERGENT

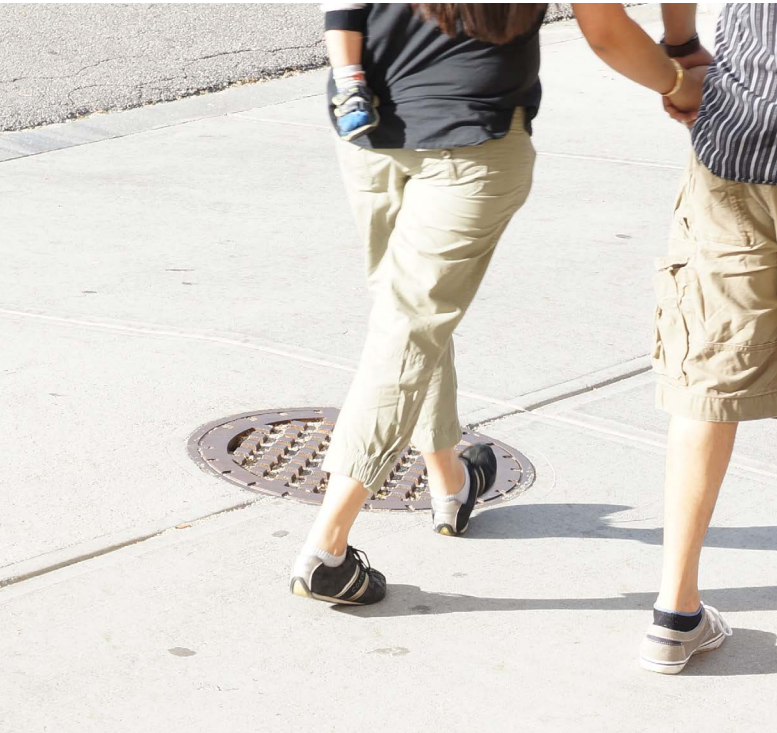
Detergent: we planed to create a bubble landscape in a rainy day. The bubble should immediately grow when there is a heavily rain. People who take shelter from the rain could enjoy the bubble landscape while waiting for rain stop. However, the detergent was mostly washed away and only little bubble left on the cover.





DRY ICE

Dry ice micro-landscape: by using dry ice we try to create the Chinese poetic mountain landscape on manhole cover. The dry ice created the effect as mountain ranges were covered in mist.



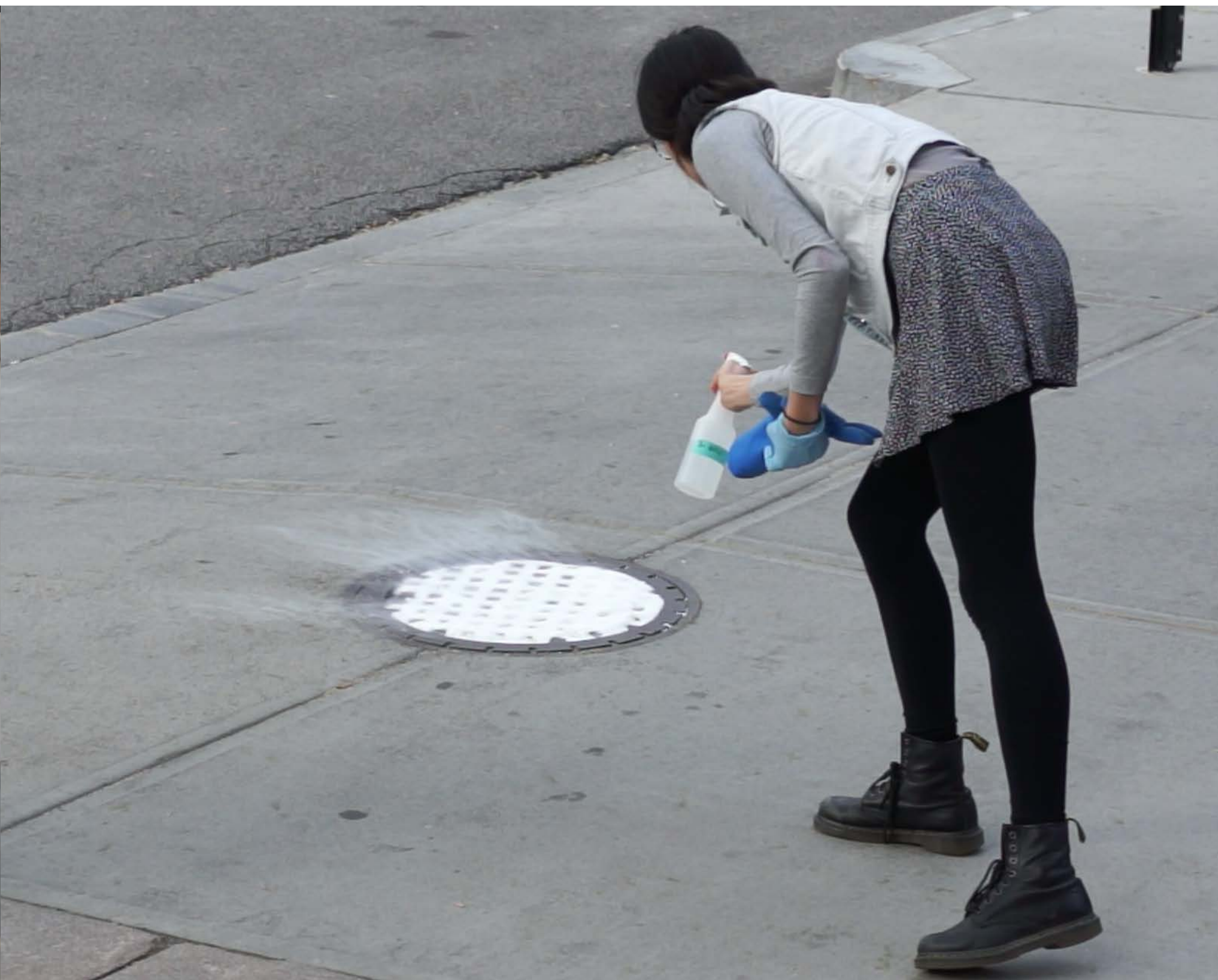


VIDEO









- END